
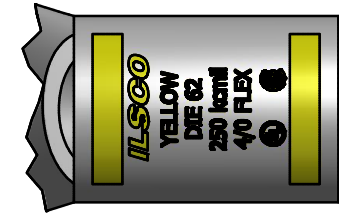
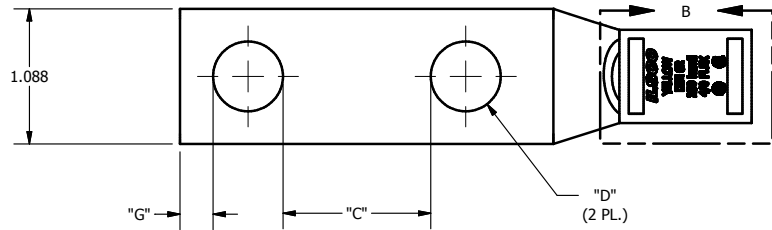
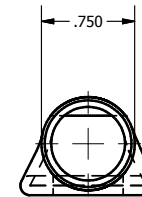
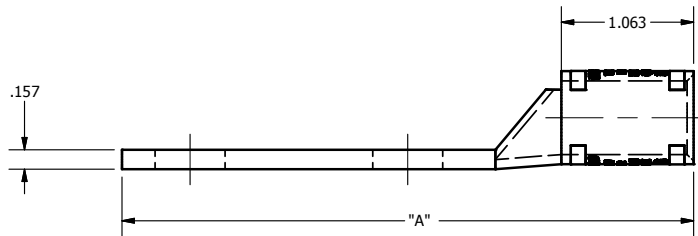


SCREW: NONE	MATERIAL: COPPER	REV: H	
CAT. NO.: SEE CHART	PLATING: EL-TIN	DRAWN BY:DW SCALE: 1:1	
INFORMATION SHEET:FORM 157	MARKING: SEE CHART	DATE:8/6/2007 SIZE: B	
			DWG NO: Y1111-D
			SHEET: 1 OF 1



DETAIL B, SCALE 2 : 1
TOP AND BOTTOM INK MARKINGS ARE IDENTICAL
INK COLOR: YELLOW
PER SPEC #: F921



CATALOG NUMBER	"A"	"C"	"D"	"G"	TANG MARKING
CSWD-250-14-12	2.844	0.219	0.281	0.180	
CSWD-250-14-58	3.031	0.344	0.281	0.180	ILSCO, CSWD-250-14-58, 1/4 X 5/8, DIE 62, 250 kcmil, 4/0 FLEX, UL, CSA
CSWD-250-14-34	3.031	0.469	0.281	0.180	ILSCO, CSWD-250-14-34, 1/4 X 3/4, 250 kcmil, 4/0 FLEX, DIE 62, UL, CSA
CSWD-250-14-1	3.281	0.719	0.281	0.180	
CSWD-250-516-58	3.031	0.282	0.343	0.180	
CSWD-250-516-34	3.281	0.407	0.343	0.180	
CSWD-250-516-78	3.281	0.532	0.343	0.180	
CSWD-250-516-1	3.531	0.657	0.343	0.180	ILSCO, CSWD-250-516-1, 5/16 X 1, 250 kcmil, 4/0 FLEX, DIE 62, UL, CSA
CSWD-250-516-134	4.094	1.407	0.343	0.180	
CSWD-250-38-34	3.281	0.344	0.406	0.211	
CSWD-250-38-78	3.531	0.469	0.406	0.211	
CSWD-250-38-1	3.531	0.594	0.406	0.211	ILSCO, CSWD-250-38-1, 3/8 X 1, 250 kcmil, 4/0 FLEX, DIE 62, UL, CSA
CSWD-250-38-116	3.531	0.656	0.406	0.211	
CSWD-250-38-118	3.719	0.719	0.406	0.211	
CSWD-250-38-134	4.219	1.344	0.406	0.211	ILSCO, C-250-38-134, 3/8 X 1-3/4, 250 kcmil, 4/0 STR FLEX, DIE 62, UL, CSA
CSWD-250-38-2	4.594	1.594	0.406	0.211	
CSWD-250-12-1	3.719	0.438	0.562	0.265	
CSWD-250-12-114	4.094	0.688	0.562	0.265	ILSCO, C-250-12-114, 1/2 X 1-1/4, 250 kcmil, 4/0 FLEX, DIE 62, UL, CSA
CSWD-250-12-112	4.219	0.938	0.562	0.265	
CSWD-250-12-134	4.594	1.188	0.562	0.265	ILSCO, CSWD-250-12-134, 1/2 X 1-3/4, 250 kcmil, 4/0 FLEX, DIE 62, UL, CSA
CSWD-250-12-178	4.594	1.313	0.562	0.265	
CSWD-250-12-2	4.694	1.438	0.562	0.265	ILSCO, CSWD-250-12-2, 1/2 X 2, 250 kcmil, 4/0 FLEX, DIE 62, UL, CSA
CSWD-250-58-1	4.094	0.344	0.656	0.343	

THE INFORMATION CONTAINED WITHIN THIS DOCUMENT IS PROPRIETARY TO ILSCO AND MAY NOT BE DISCLOSED WITHOUT PRIOR WRITTEN CONSENT